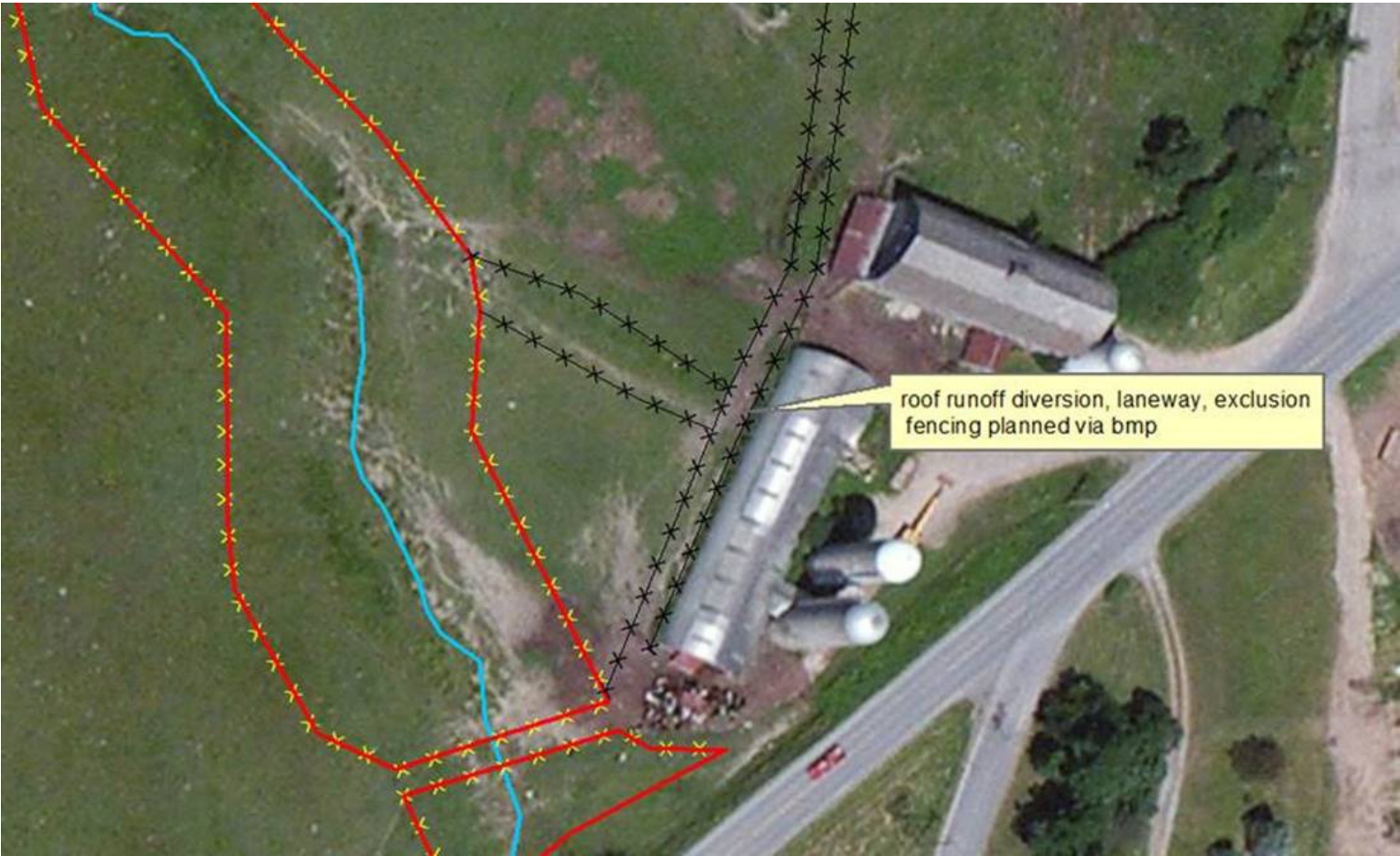
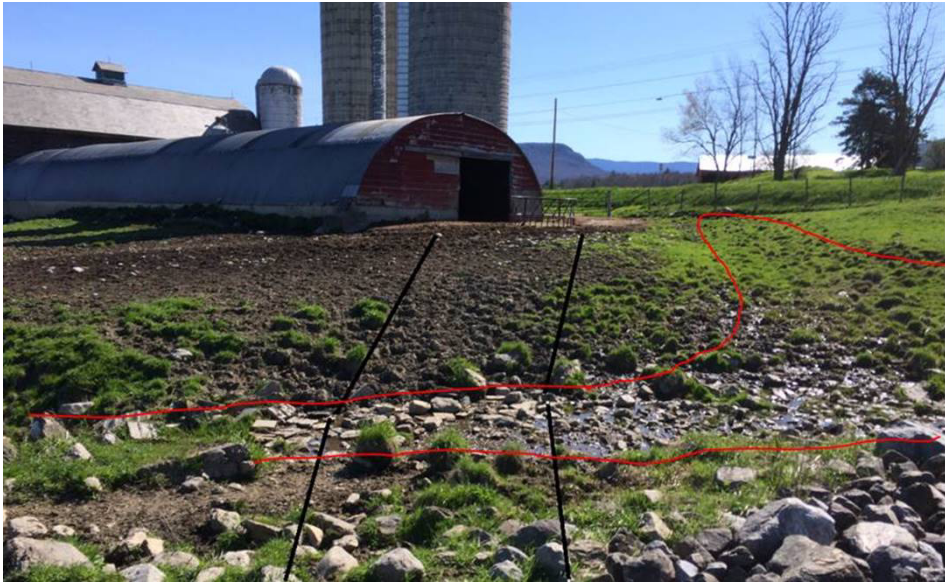




Barnyard “Wetland”



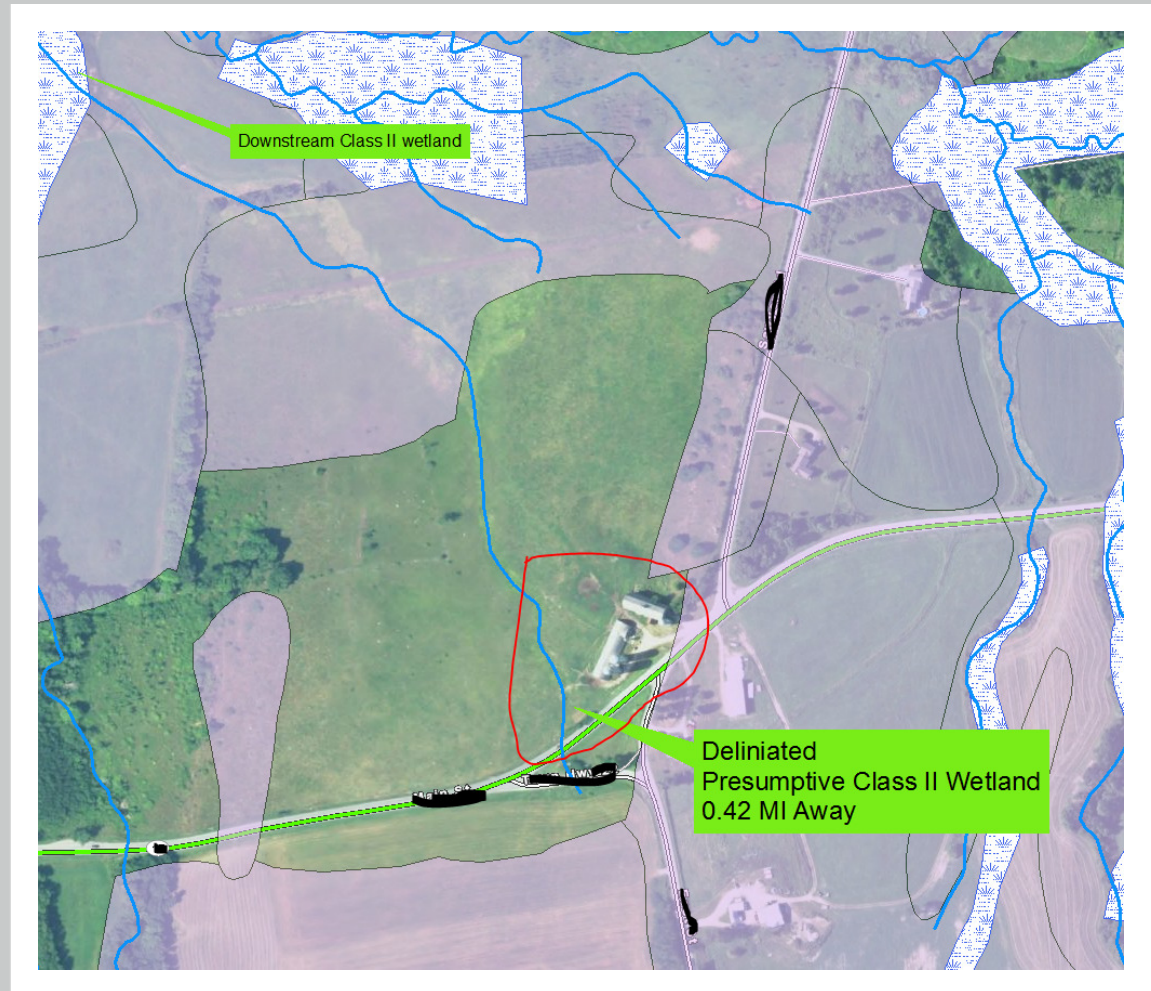
roof runoff diversion, laneway, exclusion
fencing planned via bmp



Barnyard "Wetland"

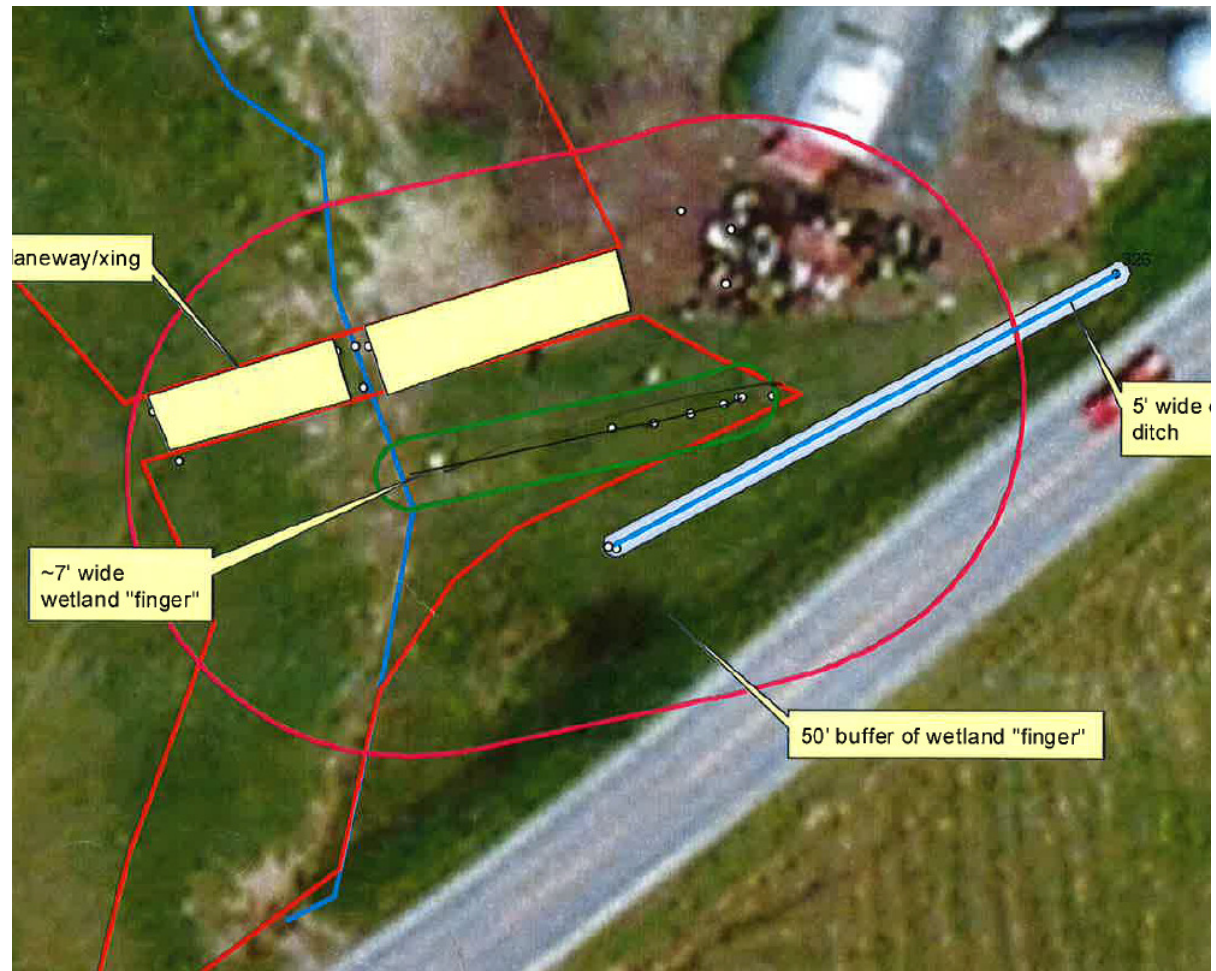
June 20, 2016 Wetland Visit

- “There is a Class II wetland present originating along Main Street, extending along a stream and is part of a larger wetland complex. The determination is this project would be, 1. Change to land use of a Class II wetland and its buffer zone and, 2. Improvement to a preexisting stream and associated riparian wetland and cattle fording area.”
- “A formal delineation was not completed, although the upper extent of the wetland within the wetland swale near the barnyard was identified in order to measure and apply the wetland buffer zone to determine the area of potential impacts... Impacts to a Class II wetland that are not considered an Allowed Use or exempt under Vermont Wetland Rules requires a wetland permit.”



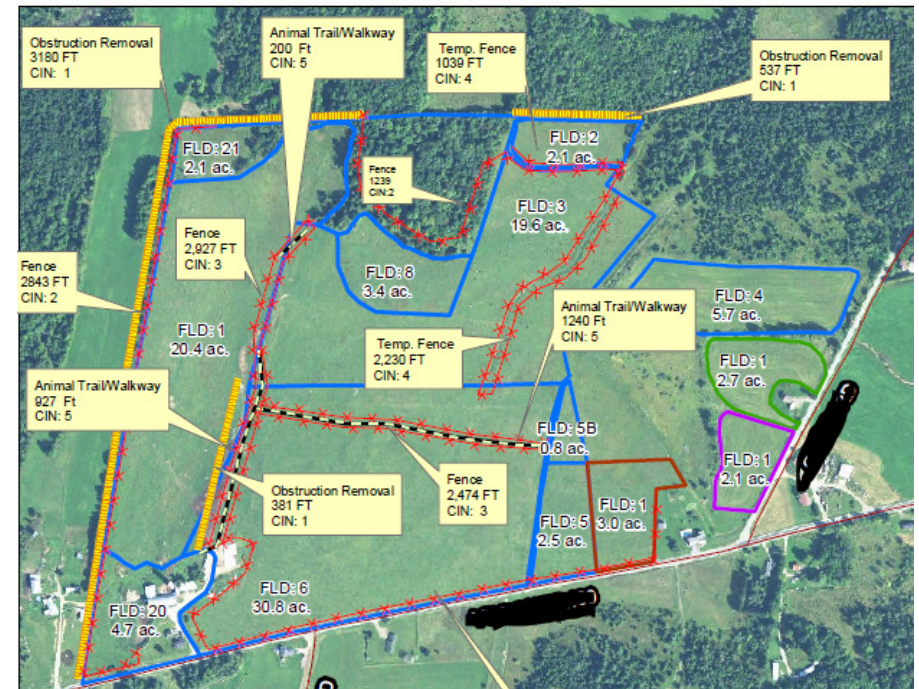
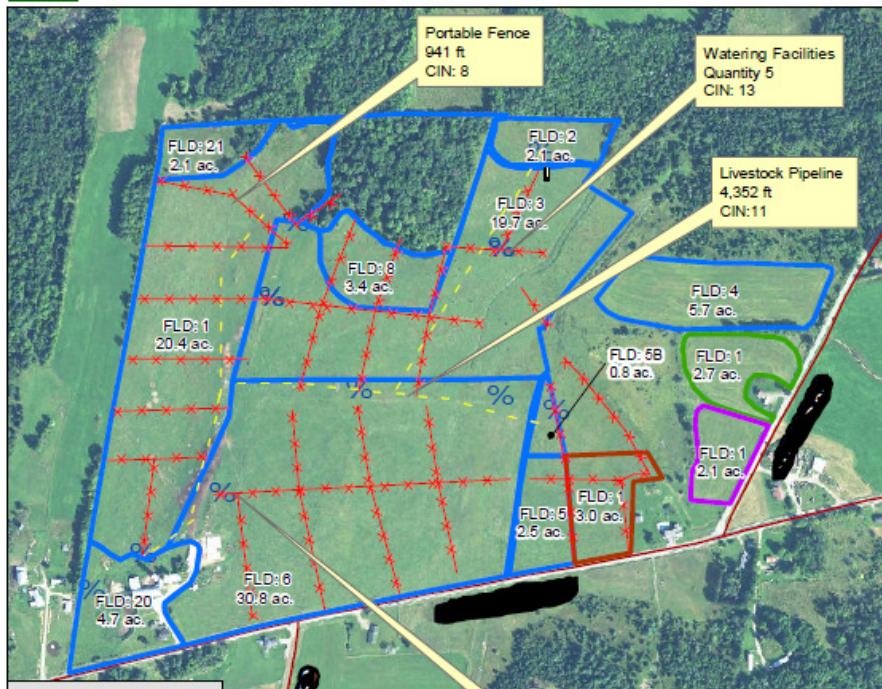
Wetland Permit & Impact Fee

- \$611.25 Impact Fee and Application Fee
- Farmer has stopped moving forward with plan because of wetland permit issue



Grazing Management and Stream Fencing





Planned Conservation Practices

Customer(s):

Field Office: Montpelier
Assisted By: VAAFM
State and County: VT, Orleans



Downstream Class II Wetland

\$10,952.25 Estimated Wetland Impact Fee for Entire Project

Install 30" Culvert
40 ft. Animal Trail

1190 ft. Animal Trail
500 ft. water bars every 50ft. totaling 9 bars
Rock Armoring
500 ft. along steep portion of trail

0.81 Miles Upstream from a delineated Class II Wetland

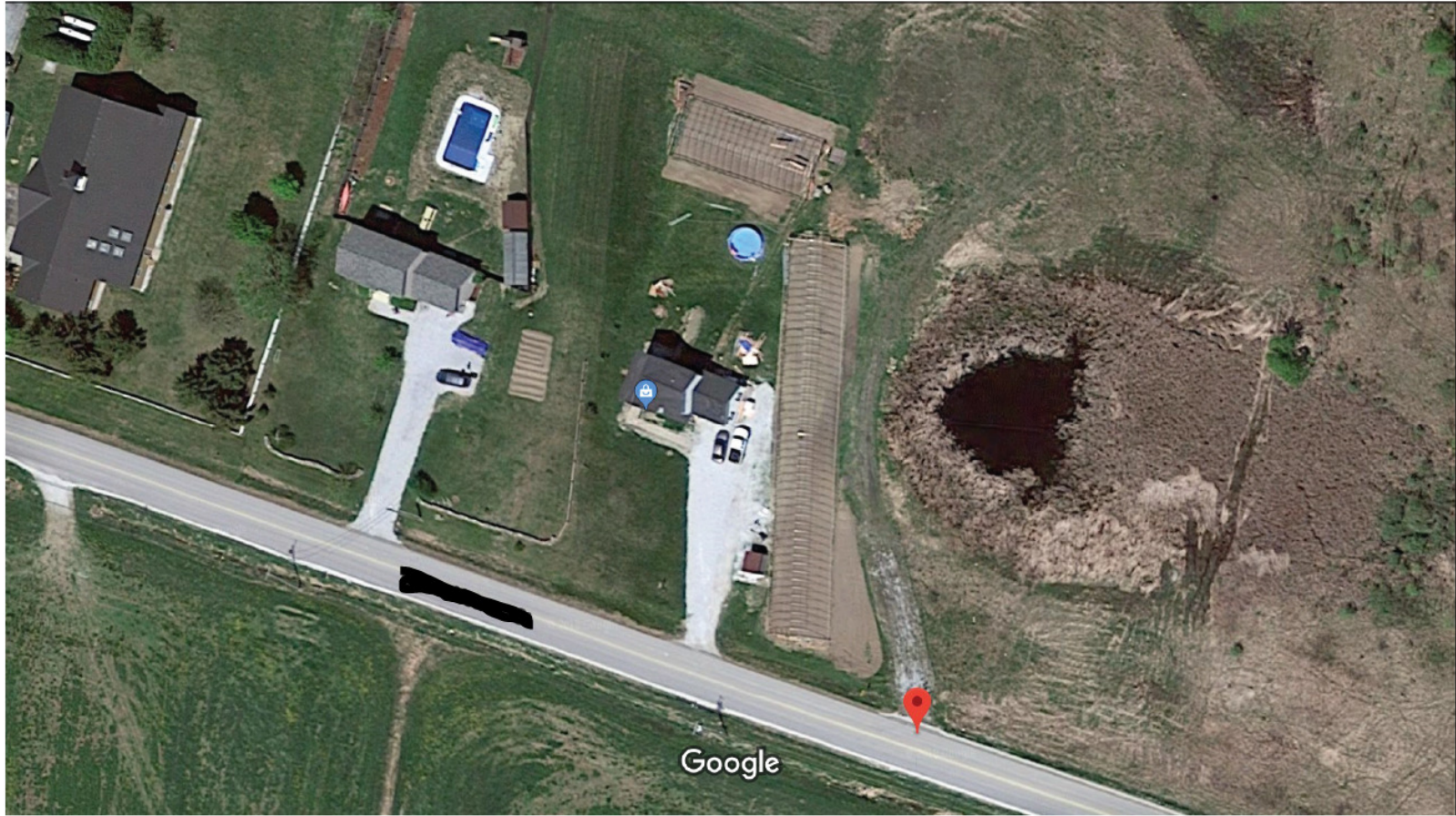
Install Timber bridge
50 ft. Animal Trail

- Legend**
- Stream-Crossing
 - Rock Armoring
 - Animal-Trail
 - Water_VHDCARTO_line
 - Field Boundary
 - Class II Wetlands
 - Road Names
 - US Highways
 - State Highways
 - Interstate Highway
 - US Highway
 - State Highway
 - Local Road
 - Other
 - Roads - Private (E911)
 - Driveways
 - Rail Lines

Newport VT

VERMONT

Imagery Year: 2014



Imagery ©2018 Google, Map data ©2018 Google 50 ft



1: 9,739
 March 23, 2018



LEGEND

- Wetland - VSWI
 - Class 1 Wetland
 - Class 2 Wetland
 - Buffer
- Wetlands Advisory Layer
- Soils - Hydric
- Roads
 - Interstate
 - Principal Arterial
 - Minor Arterial
 - Major Collector
 - Minor Collector
 - Local
 - Not part of function Classification S
- Waterbody
- Stream
- Parcels (where available)
- Town Boundary

NOTES



Section 404 of the Clean Water Act

33 U.S.C. §1251 et seq. (1972)

- **Exemptions to Permit Requirements**
- In general, [Section 404](#) of the [Clean Water Act](#) requires permits for the discharge of dredged or fill material into [waters of the United States](#), including wetlands. However, certain activities are exempt from permit requirements under Section 404(f)(1).
- **Activities Exempt under the Clean Water Act, Section 404(f)(1)**
- Established (ongoing) farming, ranching, and silviculture activities such as plowing, seeding, cultivating, minor drainage, harvesting for the production of food, fiber, and forest products, or upland soil and water conservation practices
- Maintenance (but not construction) of drainage ditches
- Construction and maintenance of irrigation ditches
- Construction and maintenance of farm or stock ponds
- Construction and maintenance of farm and forest roads, in accordance with best management practices
- Maintenance of structures such as dams, dikes, and levees